

Rigid Vinyl Plank Installation Instructions

This product's locking installation system allows the planks to be installed without using adhesives. It is a floating floor installation. Do not install fixed objects, such as cabinets, on top of the flooring or fasten trim/molding/transition pieces directly to the floor. The planks should be installed 5/16" away from all vertical surfaces such as walls, cabinets, pipes, etc.

Product Inspection

- Inspection of all flooring material must be done prior to the installation.
- Materials with visible defects are not covered under warranties once they are installed.
- Rigid Vinyl Planks are manufactured in accordance with accepted industry standards, which permit a defect tolerance not to exceed 2%.

Sub-Floor Preparation

- Sub-floor must be flat, dry, smooth, level, free from residues and structurally sound.
- The subfloor must be level to within 3/16" in 10' or 1/8" in 6'.
- For concrete substrates, conduct moisture testing. Moisture Vapor Emission Rate (MVER) cannot exceed 5lbs and/or Relative Humidity cannot exceed 90% (in-situ probe).
- Irregularities in concrete, embossed existing resilient floors, ceramic tile floors, ceramic and marble grout joints, should be filled and leveled using a cementitious based patch.
- If installing over existing resilient flooring, the existing flooring must be clean, dry, and fully adhered to the subfloor. SPC products should not be installed over existing cushion back sheet vinyl, or products with an existing cushioned underlayment. You cannot install over two existing layers of resilient flooring.

Site Conditions

- The area to receive Rigid Vinyl Planks should be acclimated between 65°F (18°C) and 85°F (29°C) for 48 hours before installation, during installation, and 48 hours after completion. Maintain temperatures between 55°F (13°C) and 85°F (29°C) for the life of the product thereafter.
- Rigid Vinyl Planks can be installed over Hydronic Radiant Floors, but the subfloor surface temperature cannot not exceed a maximum of 85°F (29°C).
- Remove baseboard, quarter-round moldings, wall base, appliances and furniture from room.
- After preparation work, sweep and vacuum the entire work area to remove all dust and debris.

Installation Guidelines

- Rigid Vinyl Planks must be installed indoors.
- Door trim should be under-cut to allow flooring to move freely without being pinched.
- Whenever possible, plan the layout so that the joints in the planks do not fall on top of joints or seams in
- Wooden subfloor joists should be spaced no wider than 16" on center.
- The end joints of the planks should be staggered a minimum of 6" apart.
- Additional underlayment may not be installed under products that already have attached cushions.
- Runs exceeding 45ft in length or 25ft in width require an expansion gap. A T-Mold Transition strip can be used to cover the expansion gap.
- Avoid exposure to long periods of direct sunlight. Use blinds, curtains, or shades to assure that the product is not overheated due to direct sunlight exposure.

LVT - Standard installation - Angle-Angle

E. Installation method of floor panels

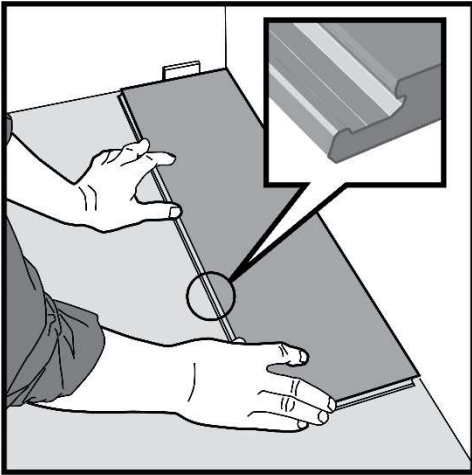


Fig 1.

First plank, first row.

Place a distance 8 mm thickness to the left and position the plank against the wall.

Later, after 3 rows, you can easily position the flooring against the front wall with distances 8 mm.

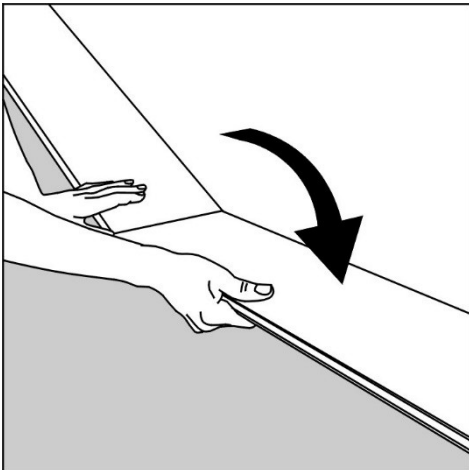


Fig 2.

Second plank, first row

Press the short end of the next floorboard at an angle to the first one, and then lay down.

Complete the first row in the same way.

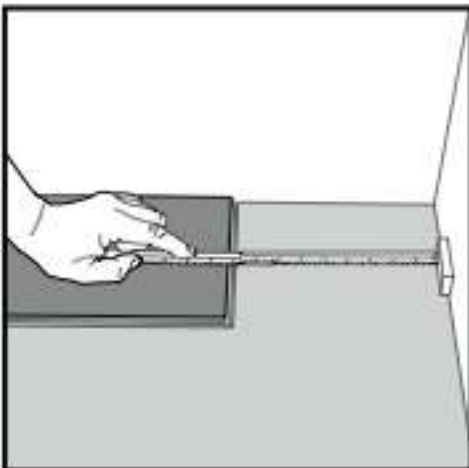


Fig 3.

At the end of the first row, put a distance 8 mm, to the wall and measure the length of the last plank to fit.

Cut the last panel to correct length, recommended min length is two times the width of the plank

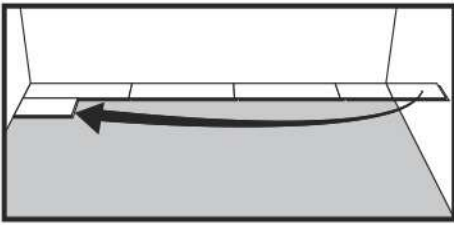


Fig 4.

Second row. Position the remaining part of the first row's last plank as first plank of second row. Keep again two times the width as min length.

Put a distance against the wall.

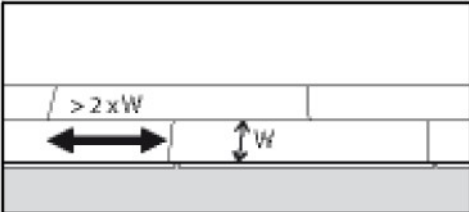


Fig 5.

General. Distances between short ends.

Minimum distance between short ends of planks in parallel rows shall not be less than about two times the width of the plank.

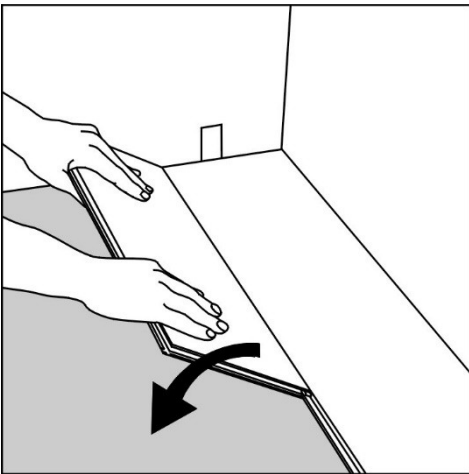


Fig 6.

Place the floorboard an angle against the floorboard in the previous row, press forward and

fold down at the same time. Leave the panel in a somewhat up angled position where the panels start to loc. To make this further easier, a wedge with the suitable angle can be placed under the plank near the short side joint as support.



Fig 7.

Second plank second row.

Place the short end of the floorboard at an angle against the previous installed floorboard and fold down all the way.

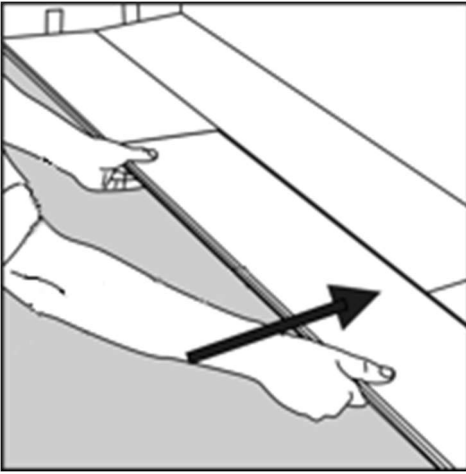


Fig 8.

Push to slide the plank against the row in front so it aligns with the first plank. Put it down like with the first plank when the floorboards are positioned tightly together. The first/previous plank can now be folded completely down to horizontal position and if a wedge is used it can be moved to the next short end joint.

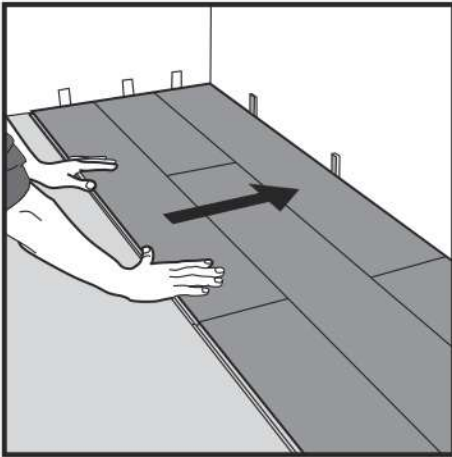


Fig 11.

After 2-3 rows.

Adjust the distance to the front wall by placing distances 8 mm. Keep the distances in position during the entire time of installation and remove once the installation is completed.

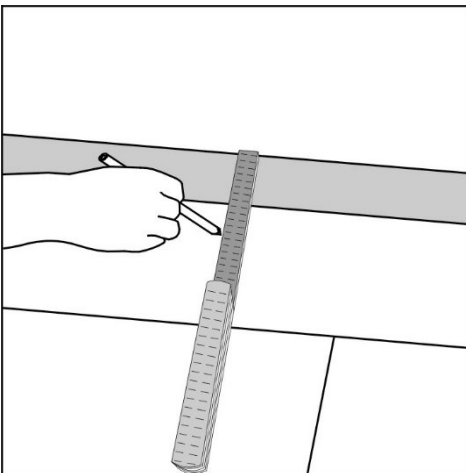


Fig 12.

If the wall is uneven, the floorboards must be adapted to its contours. Mark the floorboards with the contour of the wall. Do not forget to leave ca 8 mm space to the wall.

This procedure shall be used also for the first row if necessary.

Horizontal installation

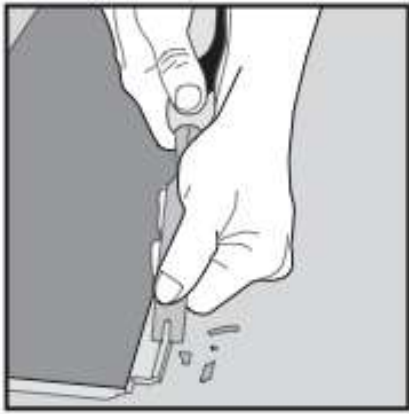


Fig 13.

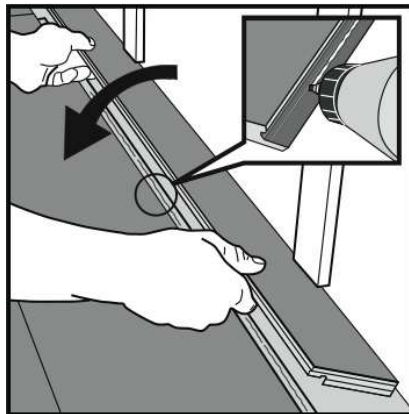


Fig 14.

Cut off the locking element with a chisel, apply applicable glue on the adjusted strip and push the planks horizontally together. If necessary, place some spacers between last board and the wall during the hardening time of the glue. The method can also be applied to the short ends.

Radiator pipes – Principle cut out



Fig 15.

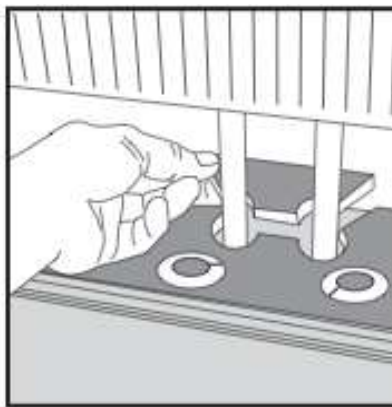


Fig 16.

Installation at for example radiator pipes.

Mark the centre of the holes and drill the hole with a diameter about 16 mm bigger than the pipe diameter (= 8 mm gap around), cut as shown with a saw or with a sharp utility knife. Install the floor plank. If necessary, put glue on the cut piece and replace.

Warranty

These Rigid Vinyl Planks carry a Ltd. Residential Warranty and a Ltd. Light Commercial Warranty for wear to the finish under proper usage and maintenance conditions. Refer to Kraus' written warranty documents for details on the definition of Light Commercial spaces. The length of the Warranties are based upon the wear layer thickness of each product, and are listed below. The Warranties apply only to the original purchaser and proof of purchase is required for all claims. Claims for wear must show a minimum dime size area. Defect of goods must be proven by inspection procedures deemed proper by the Manufacturer. Warranty is conditioned upon Manufacturers receipt of notice in writing from the buyer of the alleged defect prior to expiration of the

warranty period and evidence that the products were properly installed and not subject to any of the exclusions described below.

Exclusions

- Any visible defects noted after installation.
- Consequential or incidental damages, such as any loss, expense or damages other than to the flooring itself that may result from a defect in the flooring.
- Improper installation.
- Improper maintenance or inadequate care, including, but not limited to, mold or mildew growth as a result of excessive moisture accumulation.
- Accidents, abuse, or misuse.
- Building settling or uneven sub-floor.
- Damages caused by furniture without felt pads or protective covers.
- Damages caused by sharp objects making contact with the floor.
- Direct sunlight can affect the appearance and performance of the material and issues caused by the sunlight are not manufacturing defects. During peak hours of sunlight, blinds, shades or drapes should be closed to lessen the potential impact and prevent thermal expansion.
- Chair pads must be used under rolling chairs.
- Products installed in areas subject to rolling loads.
- Products installed in any space that does not have a permanent HVAC system.

Limited Warranty Term Length

- The length of each warranty is determined by the product's wear layer thickness.

Wear Layer Thickness	Residential	Light Commercial
6 mil	15 Years	N/A
12 mil	25 Years	7 Years
20 mil	30 Years	10 Years
22 mil	35 Years	12 Years

Please refer to Kraus' written warranty documents for additional details.

Maintenance

- Place rugs at entry points to help trap grit and absorb moisture that may damage the finish. This can protect the floors from dirt or wear. Do not use rubber backed rugs that mat trap subfloor moisture.
- To prevent abrasive dirt and dust from accumulating and scratching the finish, sweep or dust mop your floor once a week or more if needed.
- Do not use harsh abrasive cleaners, bleach, ammonia or citrus based cleaners, wax or acrylic polishes, or oil soaps. These may dull or damage the finish, leaving a greasy film and making the floor slippery and more difficult to clean.
- Protect your floor against direct sunlight or any intense source of artificial lighting. Over time, intense natural and artificial light may discolor the floors.
- Do not roll or drag heavy objects across your floor. Do not wear shoes having heel taps, spikes, cleats, rocks, gravel or sharp objects protruding from the sole.
- Add felt pads to all furniture and chair legs to prevent damage to the floor. Replace the felt pads when dirty or worn. For extremely heavy objects, use wide, non-staining rubber cups. Protective floor coverings for wheeled office furniture should be used.