

LEED QUALIFIED

Recycled Content:

Based on the use of recycled materials, which minimizes the impacts of processing virgin materials and reduces the amount of landfill waste. dBcover CB carpet cushion contains recycled rubber and can contribute to LEED points.

Low Emitting Materials:

If all carpet and carpet cushion meets the requirements of the Carpet and Rug Institute (CRI) Green Label program and carpet adhesive meets SCAQMD Rule #1168, LEED points can be earned. dBcover CB carpet cushion is CRI Green Label approved.

Regional Priority:

Manufactured in Markham, Ontario, Canada. Delivery within 800KM of this location can contribute to LEED points.

Installation and removal

- Direct glue-down of carpet is less expensive but labour, floor preparation, removal, floor repair and clean-up costs will outweigh any savings.
- Cushion reduces floor preparation time and expense and masks surface irregularities while providing comfort and carpet performance.
- Tested and approved for double glue installations.

Double glue specification

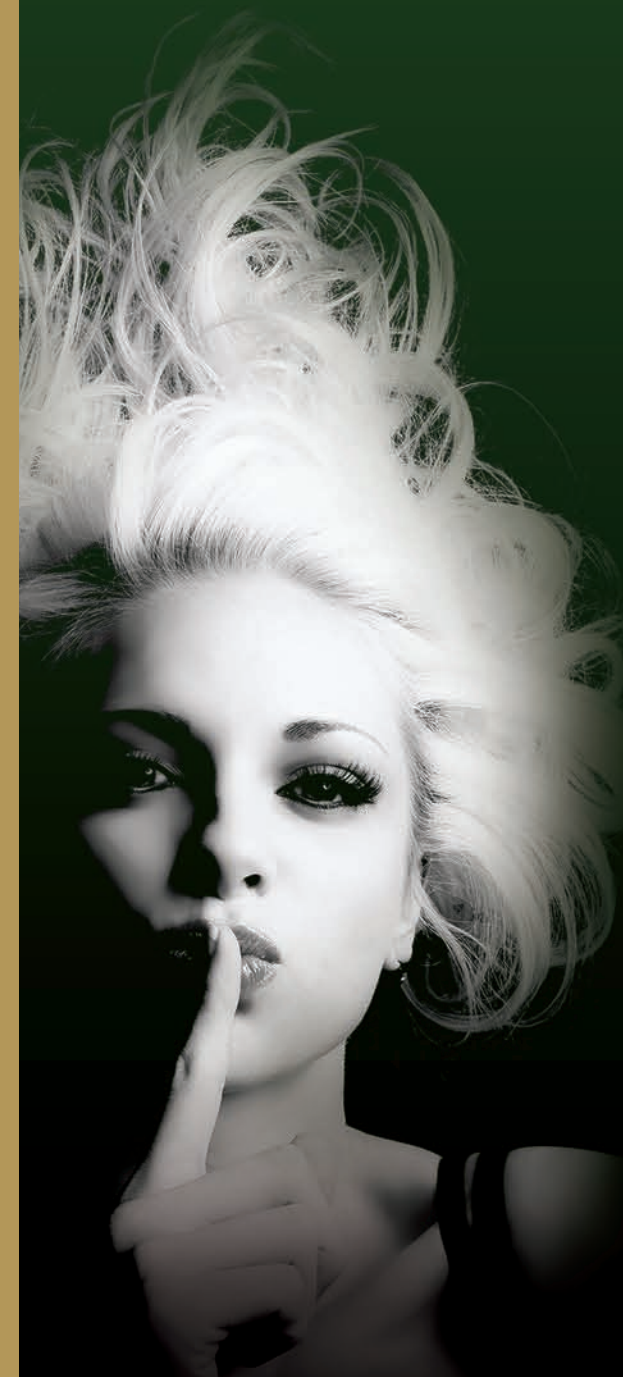
dBcoverCB contract carpet cushion installation will be by the Double Glue method. The cushion will be open cell synthetic rubber latex containing recycled tire crumb, in a black colour, flat finish, on TEXTRON® backing, with a minimum thickness of .158" or 4mm, a weight of 62 Oz per sq yd., a density of 22 lbs per cu ft. Made in Canada by Fabricushion Ltd. It shall conform to ASTM D 2859 (F.R. Pill test) and ASTM C518 (R Value) of 0.64 and be approved for heavy commercial and roller traffic use.

Contact Us

For more information, or to place an order, please contact your Kraus representative.



THE GOLD STANDARD IN UNDERLAYMENTS



dBcover™
broadloom carpet cushion



dBcover™

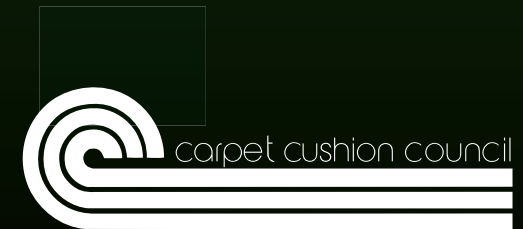
broadloom carpet cushion

Premium double stick commercial carpet cushion

dBcover CB is made from recycled auto tires and Textron high performance backing containing responsible reforestation materials, which contributes to LEED® green building credits.

dBcover CB contains a 100% natural treatment to prevent the growth of mold, mildew and fungus and ZERO VOCs.

- High density construction for superior carpet performance and comfort underfoot
- Superior performance backing for strength, durability and quality installation
- Can be installed above or below grade and over radiant heat
- Will not cause carpet to stretch and buckle
- 6 foot wide roll for ease of installation and cost savings



dBcover CB Specifications

PROPERTIES	dBcover CB
uses	Wall-to-wall carpet Area rugs
Application	Medium Heavy Extra Heavy Traffic Residential and Commercial
Installations	Conventional installation and double glue Above and below grade Over radiant floors
Anti-microbial	Ultra-Fresh
Hypo-allergenic	Yes
Baking Soda	Yes
R-Value	0.64 / ASTM C518
Flame Retardant	ASTM D2859 Passes Pill Test
Content	100% virgin SBR synthetic rubber with recycled tire crumb
Backing	High performance / TEXTRON
Thickness	6.0 mm (0.236")
Density	352.4 kg / m ³ (22 lbs / ft ³)
Roll Width	1.8 m (72" 6 ft)
Roll Size	16.73 m ² (18 yd ² 180 ft ²)
Roll Weight	38 kgs (83 lbs)
Colour	Beige-Brown
Weight	2.26 kg m ² (66.5 oz / yd ²)
Phillips Chair Test	High performance results
Warranty	Guaranteed for the useful life of the original carpet when installed wall-to-wall.

